

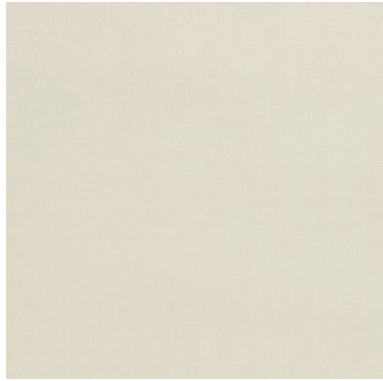
PRODUCT MEMO:

LINEN

Durabody Ceramic Floor Tile

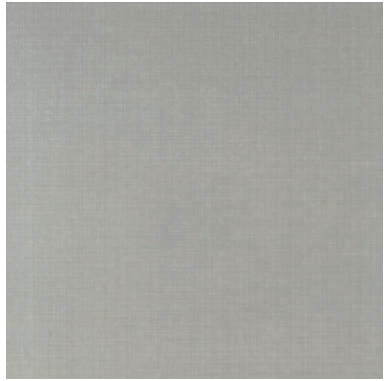
Interceramic®
CRAFTED FOR LIFE
interceramicusa.com

Canvas



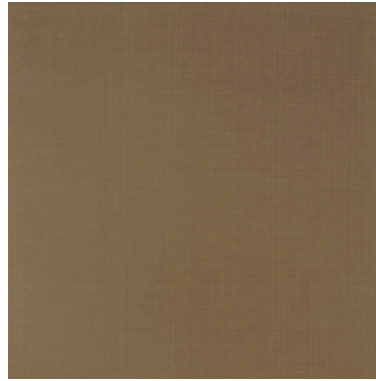
PEI IV

Smoke



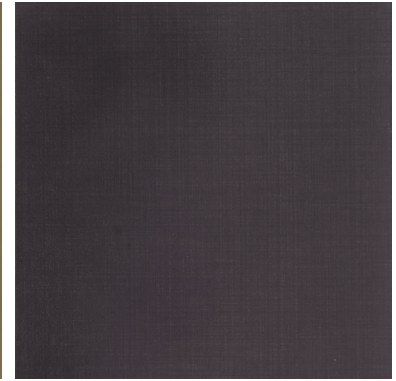
PEI IV

Marrone



PEI III

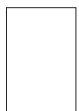
Graphite



PEI III

| | | | |
|--------------------------------|--|---|-------------------------------------|
| Product Type: | Durabody Ceramic Floor Tile | | |
| Field Tile Sizes: | 16"x24" | | |
| Trim & Special Pieces: | 3"x16" Bullnose | | |
| Technical Data: | PEI: IV Texture Spectrum: Moderate Frost Resistance: Resistant | Breaking Strength: >300 lbs DCOF: >0.42 Water Absorption: <3% | |
| Packaging Information: 16"x24" | PCS/CTN: 6 CTN/PLT: 32 | SF/CTN: 15.50 LBS/CTN: 71.25 | SF/PLT: 496.00 LBS/PLT: 2,280.11 |
| Marketing Materials: | Sample Board (24x25): Design Board: | SB.LINE.1144.1USA DB.LINE.677.1USAOT | \$13.00 \$ 6.00 |

SIZES



16"x24"

TRIM (Available in all colors)



3"x16"
Bullnose



DURABODY CERAMIC
More Dense, More Durable, More Designs.



EXTERIOR APPLICATIONS



GCS Certified